

Total No of Questions: [6]

SEAT NO. :

[Total No. of Pages :2]

***In-Semester Examination
T.E. (Production)
Process Planning and Tool Selection (311095)
(2015 Pattern)***

Time: 1 Hours

Max. Marks : 30

Instructions to the candidates:

- 1) Neat diagrams must be drawn wherever necessary.***
- 2) Figures to the right side indicate full marks.***
- 3) Solve Q1 or Q2, Q3 or Q4, Q5 or Q6***
- 4) Use of electronic pocket Calculator is allowed.***
- 5) Assume Suitable data if necessary.***

Q.1 With reference to the figure-1 of Template Jig, how product engineer will communicate with process engineer? **[10]**

OR

Q.2 What is process engineering? What is the role of process engineering in the organization? Explain with graphical portrayal. **[10]**

Q.3 a) What is the purpose and utilization of tolerance chart? **[6]**

b) What is stock removal? What is working dimension? **[4]**

OR

Q.4 a) What is tolerance stack? Explain concept of straightness and flatness in dimensional analysis. **[6]**

b) Write short note on surface integrity. **[4]**

Q.5 What is Work piece Control? What is the different variables influencing workpiece control? **[10]**

OR

Q.6 What are the different types of operations used for manufacturing a product? **[10]**

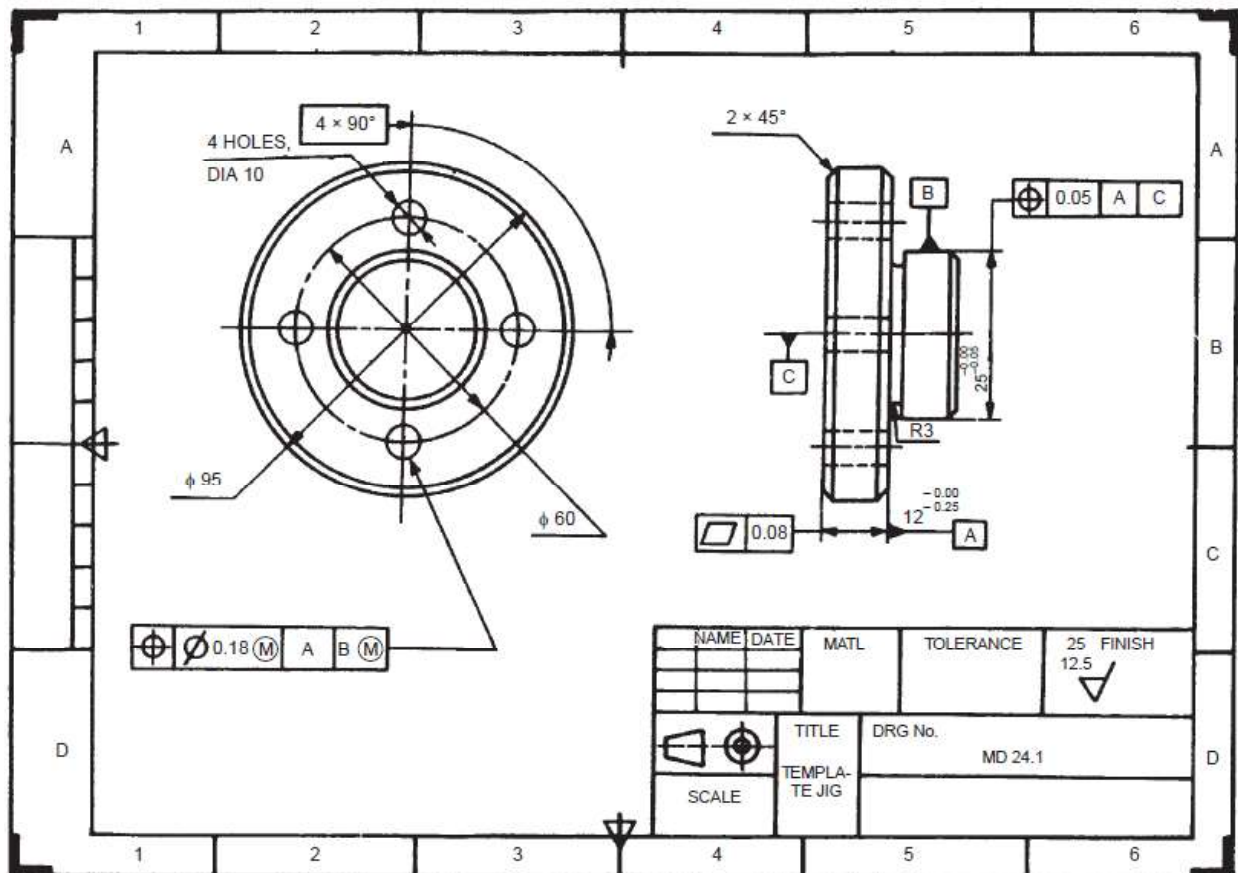


Fig-1: Template Jig