



K. K. Wagh Institute of Engineering Education & Research, Nashik
(An Autonomous Institute From A.Y. 2022-23)

SUMMER-2024	
Exam Seat No.:	
Academic Year:2023-2024	Semester: I/II
Class: FY	Program: B.Tech
Branch Code: FYE	Pattern:2022
Name of Course: Engineering Drawing	Course Code: FYE221012
Max. Marks:60	Duration:2.30 Hrs.

Instructions: Candidates should read carefully the instructions printed on the Question Paper and on the cover page of the Answer Book, which is provided for their use.

1. This question paper contains 03 page(s).
2. Answer to each new question is to be started on a new page.
3. Assume suitable data wherever required, but justify it.
4. Draw the neat labelled diagrams, wherever necessary.
5. The last columns indicates the Course Outcome and level of Blooms Taxonomy of the Question/sub-question.

Question No. 1 Attempt following Question

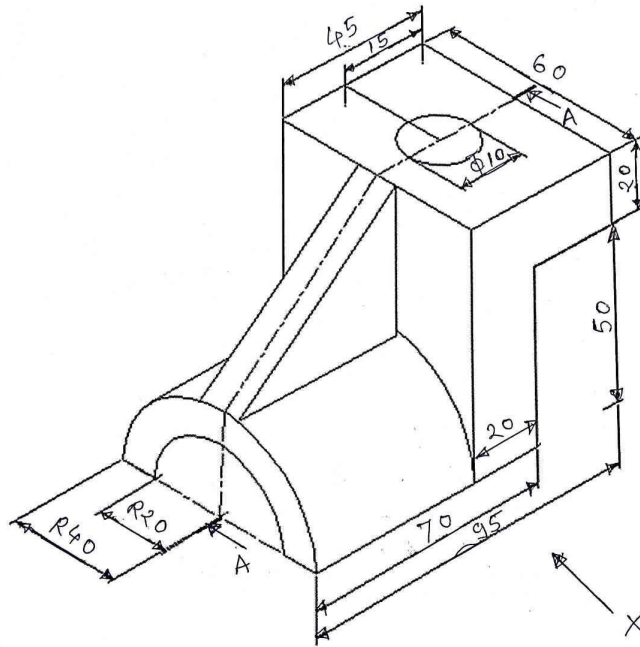
- 1.a) The Plan Length of line PQ measures 75 mm. The end P is 14 mm above the HP and 10 mm in front of VP. The end D is at 75mm above HP and 65 mm in front of VP. Draw the projections; find true length and true inclinations. (12) CO4

OR

- 1.b) An isosceles triangle ABC having its base AB = 45 mm and altitude 65 mm is resting on the H.P. on its base AB. Draw the projections of the plane when its surface is inclined to H.P. at an angle of 40° and the base AB which is on H.P. is making an angle of 45° to V.P. (12) CO4

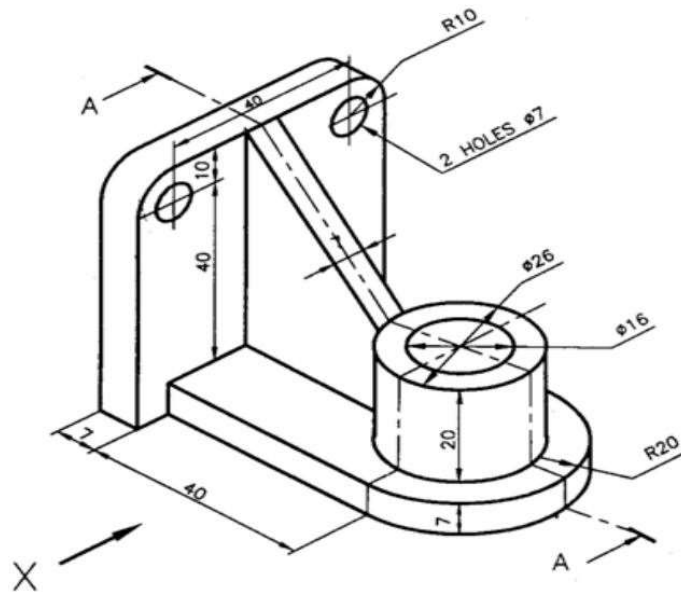
Question No. 2 Attempt following Question

- 2.a) Using First angle Projection Method, Draw 1. Sectional Front View looking from direction X (16) CO3
2. Right Hand Side View 3. Top View



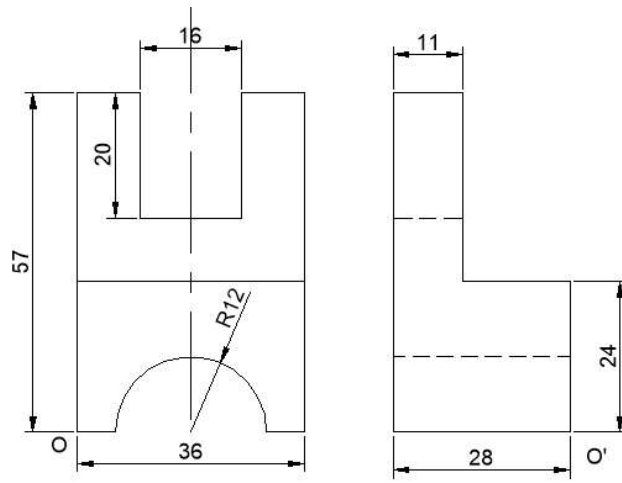
OR

- 2.b) The following figure shows the pictorial view of an object. Draw i) Sectional Front view from looking from X ii) Top view and iii) Right hand Side view (16) CO3



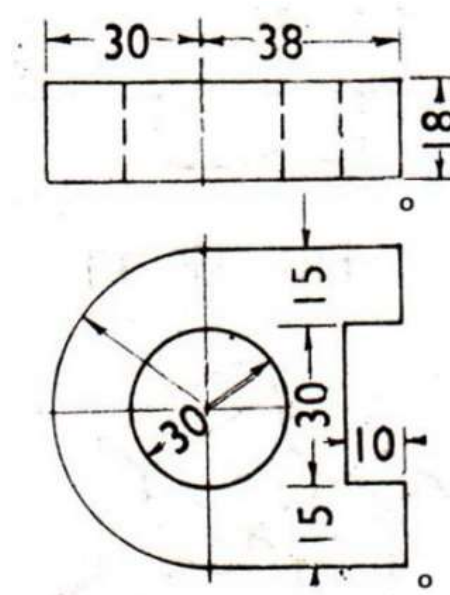
Question No. 3 Attempt following Question

- 3.a) Figure shows the FV and RHSV of the object. Draw its isometric view assuming the origin O at given corner. Give overall dimensions. (16) CO3



OR

- 3.b) Figure shows the front and top view of the object. Draw its isometric view considering origin 'O'. (16) CO3
Give overall dimensions.



Question No. 4 Attempt following Question

- 4.a) Draw the development of the lateral surface of the lower portion of a cylinder of diameter 40 mm and axis 75 mm when sectioned by a plane inclined at 35° to HP and perpendicular to VP and bisecting the axis. (16) CO4

OR

- 4.b) A square pyramid of base size 35 mm and axis length 65 mm rests on HP on one of its edges of the base which is inclined to VP at 30° degree. Draw the projections of the pyramid when the axis is inclined to HP at 45° degree. (16) CO4

XXXXXXXXXXXXXXXXXXXXXXXXXXXXXXXXXXXX