



K. K. Wagh Institute of Engineering Education & Research, Nashik
(An Autonomous Institute From A.Y. 2022-23)

SUMMER-2024	
Exam Seat No.:	
Academic Year:2023-2024	Semester:I/II
Class:FY	Program:B.Tech
Branch Code:FYE	Pattern:2023
Name of Course:Engineering Drawing	Course Code:2300110A
Max. Marks:60	Duration:2.30 Hrs.

Instructions: Candidates should read carefully the instructions printed on the Question Paper and on the cover page of the Answer Book, which is provided for their use.

1. This question paper contains 03 page(s).
2. Answer to each new question is to be started on a new page.
3. Assume suitable data wherever required, but justify it.
4. Draw the neat labelled diagrams, wherever necessary.
5. The last columns indicates the Course Outcome and level of Blooms Taxonomy of the Question/sub-question.

Question No. 1 Attempt following Question

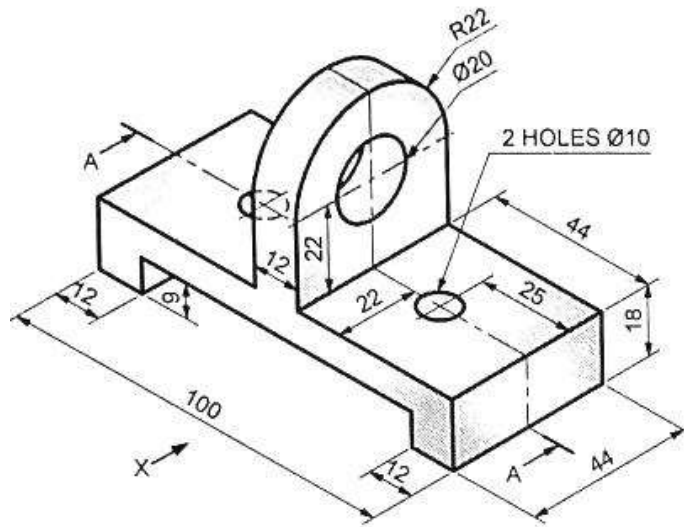
- 1.a) Line AB 65 mm long has its point A on the HP and 15 mm in front of VP. Line is inclined to HP and VP at 40° & 35° respectively. Draw the projections of line AB (12) CO4

OR

- 1.b) A pentagonal lamina of edges 25 mm is resting on HP with one of its sides such that the surface makes an angle of 60° with HP. The Edge on which it rests is inclined at 45° to VP. Draw its Projections (12) CO4

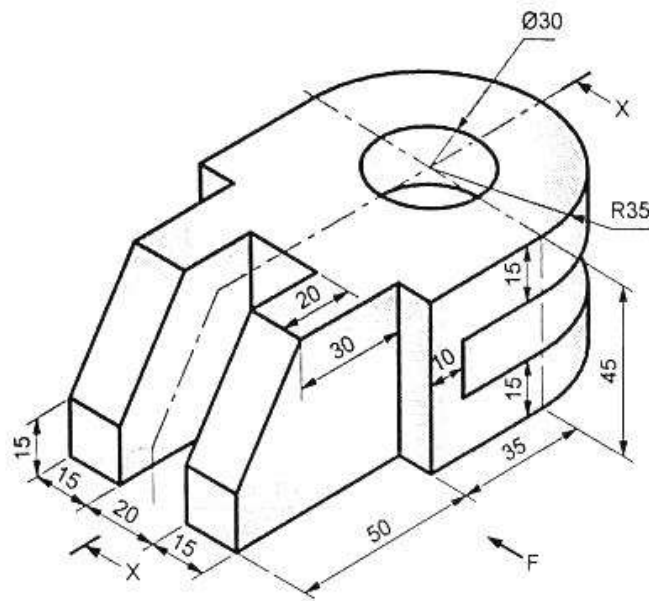
Question No. 2 Attempt following Question

- 2.a) Figure shows a pictorial view of an object. By using first angle method of projections, Draw; (16) CO3
- i) Sectional front view, along X direction (section A-A)
 - ii) Right Hand Side view
 - iii) Top View
 - iv) Dimensions



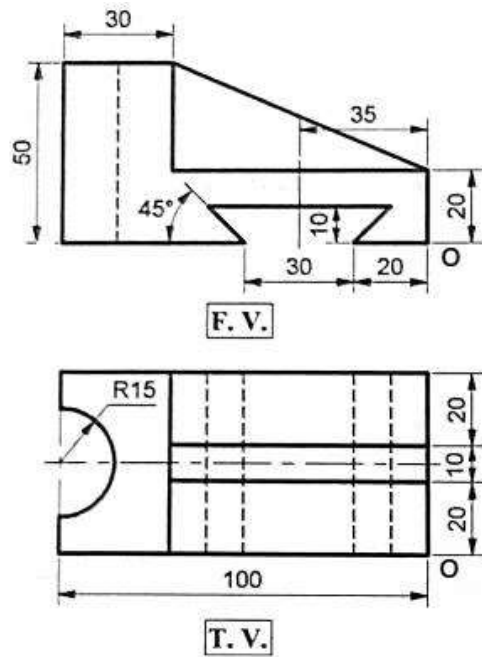
OR

- 2.b) Figure shows a pictorial view of an object. By using first angle method of projections, draw; (16) CO3
- i) Sectional front view, along F direction (section X-X)
 - ii) Left Hand Side view iii) Top View iv) Dimensions



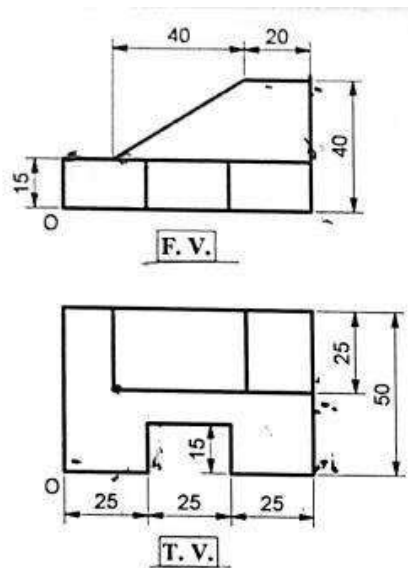
Question No. 3 Attempt following Question

- 3.a) Fig shows front view, top view. Draw isometric view with respect to Origin 'O' and show overall dimensions (16) CO3



OR

- 3.b) Fig shows front view, top view. Draw isometric view with respect to Origin 'O' and show overall dimensions (16) CO3



Question No. 4 Attempt following Question

- 4.a) A right circular cone of a base diameter 50mm and axis height 60mm has its base in H.P. It is cut by auxillary inclined plane (AIP) inclined at 45° to HP and bisecting the axis. Draw development of lateral surface (DLS) of cone. (16) CO4

OR

- 4.b) A hexagonal prism, edge of base 20 mm and axis 50 mm long, resting on its corner on HP. It is cut by a auxillary inclined plane (AIP) inclined at 45° to HP and passing through the right corner of the top face of the prism. Develop the lateral surfaces of the prism. (16) CO4

XXXXXXXXXXXXXXXXXXXXXXXXXXXX